

\$1,636,250 - Range Road 280, Rural Rocky View County

MLS® #A2212158

\$1,636,250

0 Bedroom, 0.00 Bathroom,
Land on 187.00 Acres

NONE, Rural Rocky View County, Alberta

Great opportunity to own a QUARTER with and additional 27 acres +/- for a total of 187 acres +/- . Located SW of Kathryn on the corner of RR 280 and TWP RD 260, this is a great location being only a mile and a half off pavement. The property is cultivated in canola with a small draw (see google earth shot). Opportunities to obtain large scale land have become a rarity in recent years, don't miss out on this one!

Essential Information

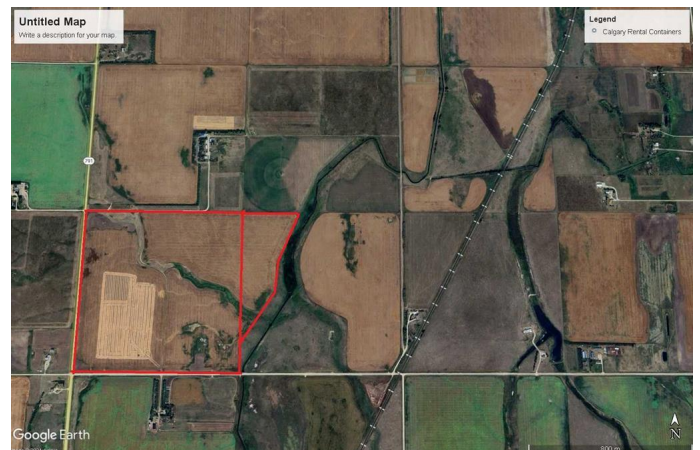
MLS® #	A2212158
Price	\$1,636,250
Bathrooms	0.00
Acres	187.00
Type	Land
Sub-Type	Residential Land
Status	Active

Community Information

Address	Range Road 280
Subdivision	NONE
City	Rural Rocky View County
County	Rocky View County
Province	Alberta
Postal Code	T4A 1J3

Additional Information

Date Listed	April 16th, 2025
-------------	------------------



Days on Market 6
Zoning Agriculture General

Listing Details

Listing Office RE/MAX Rocky View Real Estate

Data is supplied by Pillar 9â„¢ MLSÂ® System. Pillar 9â„¢ is the owner of the copyright in its MLSÂ® System. Data is deemed reliable but is not guaranteed accurate by Pillar 9â„¢. The trademarks MLSÂ®, Multiple Listing ServiceÂ® and the associated logos are owned by The Canadian Real Estate Association (CREA) and identify the quality of services provided by real estate professionals who are members of CREA. Used under license.