

# \$549,900 - 125 Hampton Crescent, Sylvan Lake

MLS® #A2204135

**\$549,900**

3 Bedroom, 3.00 Bathroom, 1,534 sqft  
Residential on 0.09 Acres

Hampton Pointe, Sylvan Lake, Alberta

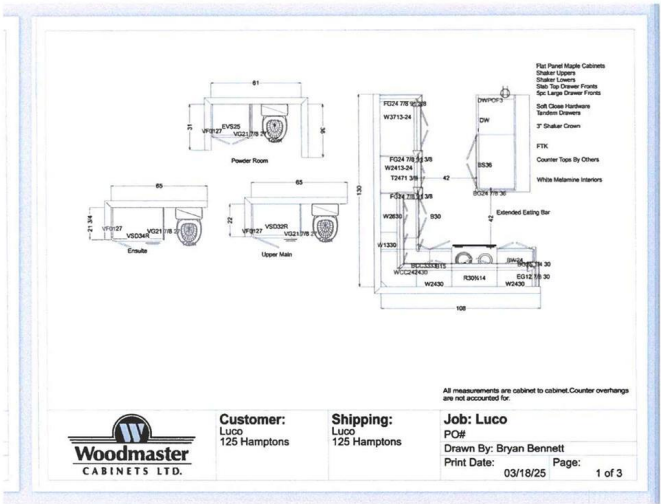
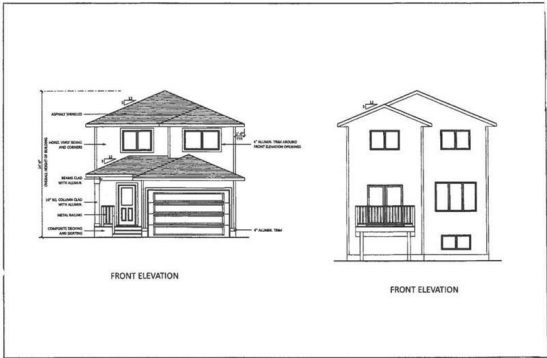
Step into the epitome of modern family living in this exquisite, newly built single family residence. This home, constructed by Luco Homes boasts a thoughtful design perfect for both first time buyers and growing families seeking comfort, convenience and style. The heart of the home features an open plan living room, kitchen and dining area seamlessly leading out to a 10â€™x10â€™ pressure treated wood deck ideal for summer bbqâ€™s.

Kitchen features mocha cabinets with maple finished island. The large foyer welcomes you with the practical mudroom off the garage, complete with a convenient 2 piece bath, ensuring a tidy organized space. Upstairs the luxury of convenience continues with upper floor dedicated laundry room, alongside three generously sized bedrooms. The master bedroom is a sanctuary of its own with a walk in closet and private 3 piece ensuite. An oversized single garage measuring 16â€™x22â€™ provides ample space for vehicles and hobbies, along with an additional 8â€™x8â€™ storage area at front perfect for work bench and garden equipment.

Built in 2025

## Essential Information

|          |           |
|----------|-----------|
| MLS® #   | A2204135  |
| Price    | \$549,900 |
| Bedrooms | 3         |



|                |             |
|----------------|-------------|
| Bathrooms      | 3.00        |
| Full Baths     | 2           |
| Half Baths     | 1           |
| Square Footage | 1,534       |
| Acres          | 0.09        |
| Year Built     | 2025        |
| Type           | Residential |
| Sub-Type       | Detached    |
| Style          | 2 Storey    |
| Status         | Active      |

### Community Information

|             |                      |
|-------------|----------------------|
| Address     | 125 Hampton Crescent |
| Subdivision | Hampton Pointe       |
| City        | Sylvan Lake          |
| County      | Red Deer County      |
| Province    | Alberta              |
| Postal Code | T4S 1S8              |

### Amenities

|                |                        |
|----------------|------------------------|
| Parking Spaces | 1                      |
| Parking        | Single Garage Attached |
| # of Garages   | 1                      |

### Interior

|                   |   |
|-------------------|---|
| Interior Features | Kitchen Island, Pantry, Walk-In Closet(s)     |
| Appliances        | Dishwasher, Microwave, Refrigerator, Stove(s) |
| Heating           | Forced Air, Natural Gas                       |
| Cooling           | None  |
| Has Basement      | Yes   |
| Basement          | Full, Unfinished                              |

### Exterior

|                   |                          |
|-------------------|--------------------------|
| Exterior Features | None                     |
| Lot Description   | Back Yard, Front Yard    |
| Roof              | Asphalt Shingle          |
| Construction      | Vinyl Siding, Wood Frame |
| Foundation        | Poured Concrete          |

### Additional Information

|                |                  |
|----------------|------------------|
| Date Listed    | March 25th, 2025 |
| Days on Market | 28               |
| Zoning         | R-5              |

## **Listing Details**

|                |                                   |
|----------------|-----------------------------------|
| Listing Office | Royal LePage Network Realty Corp. |
|----------------|-----------------------------------|

Data is supplied by Pillar 9â„¢ MLSÂ® System. Pillar 9â„¢ is the owner of the copyright in its MLSÂ® System. Data is deemed reliable but is not guaranteed accurate by Pillar 9â„¢. The trademarks MLSÂ®, Multiple Listing ServiceÂ® and the associated logos are owned by The Canadian Real Estate Association (CREA) and identify the quality of services provided by real estate professionals who are members of CREA. Used under license.