

# \$245,000 - 7, 897 Mt Sundance Manor W, Lethbridge

MLS® #A2203241

## \$245,000

2 Bedroom, 1.00 Bathroom, 949 sqft

Residential on 0.23 Acres

Sunridge, Lethbridge, Alberta

An affordable condo in Sunridge - assigned parking, close to amenities, Sunridge Park and a great option to start out! This complex is professionally managed and means you don't have to worry about any exterior maintenance! An open living area with deck, 2 bedrooms, in suite laundry and a 4 piece bathroom makes this a turn key option for those looking to start out in their real estate investment journey!

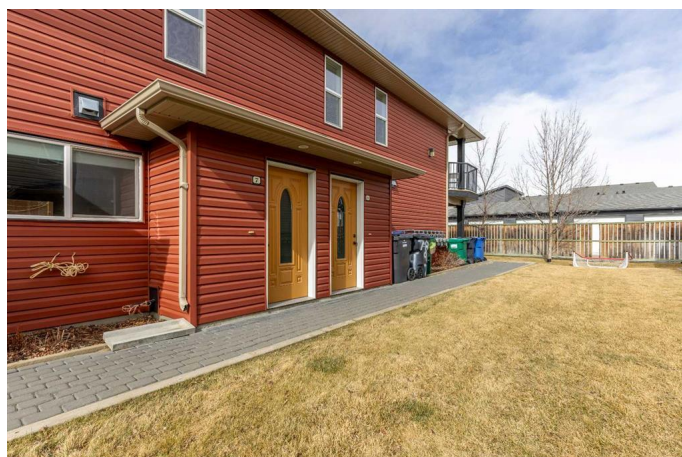
Built in 2009

### Essential Information

MLS® #	A2203241
Price	\$245,000
Bedrooms	2
Bathrooms	1.00
Full Baths	1
Square Footage	949
Acres	0.23
Year Built	2009
Type	Residential
Sub-Type	Apartment
Style	Single Level Unit
Status	Active

### Community Information

Address	7, 897 Mt Sundance Manor W
Subdivision	Sunridge



City	Lethbridge
County	Lethbridge
Province	Alberta
Postal Code	T1J 1X7

### **Amenities**

Amenities	Visitor Parking
Parking Spaces	1
Parking	Stall

### **Interior**

Interior Features	Walk-In Closet(s)
Appliances	Dishwasher, Refrigerator, Stove(s), Washer/Dryer
Heating	Forced Air
Cooling	None
# of Stories	2

### **Exterior**

Exterior Features	Private Entrance
Construction	Vinyl Siding, Wood Frame

### **Additional Information**

Date Listed	March 21st, 2025
Days on Market	29
Zoning	R-50

### **Listing Details**

Listing Office	Grassroots Realty Group
----------------	-------------------------

Data is supplied by Pillar 9â„¢ MLS® System. Pillar 9â„¢ is the owner of the copyright in its MLS® System. Data is deemed reliable but is not guaranteed accurate by Pillar 9â„¢. The trademarks MLS®, Multiple Listing Service® and the associated logos are owned by The Canadian Real Estate Association (CREA) and identify the quality of services provided by real estate professionals who are members of CREA. Used under license.