

\$674,900 - 241 Vista Drive Sw, Crossfield

MLS® #A2201108

\$674,900

5 Bedroom, 4.00 Bathroom, 1,833 sqft
Residential on 0.12 Acres

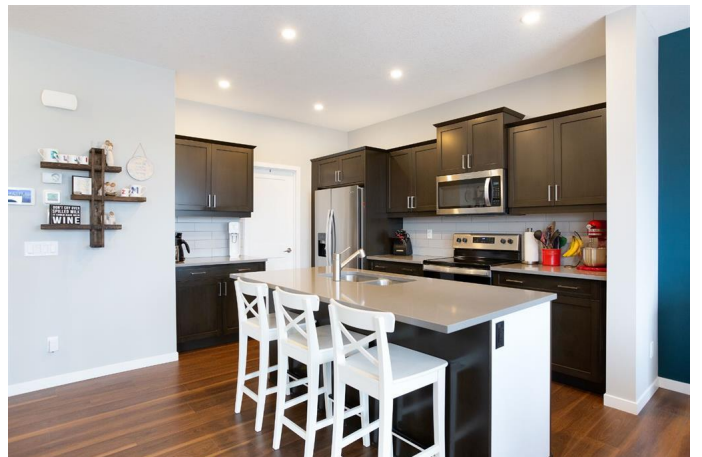
N/A, Crossfield, Alberta

This stunning home, built in 2020, is practically brand new and has been impeccably cared for. Featuring a beautifully renovated basement, this home offers 4 spacious bedrooms and 3.5 bathrooms, making it the perfect space for your growing family. One of the standout features of this home is its basement – one of the few fully developed basements you'll find in Vista – offering extra living space and versatility.

Designed by the reputable Homes by Dream, the popular "Whittaker" model boasts an open, livable layout with high-end finishes throughout. The main floor features upgraded vinyl plank flooring, adding a modern and durable touch to the space. You'll love waking up to sunny, bright mornings thanks to the east-facing backyard, which includes a full-width deck with built-in garden boxes, perfect for your green thumb.

The expansive backyard is a true outdoor haven, overlooking Amery Park, complete with community gardens and an outdoor rink. Imagine relaxing on the giant deck while taking in the serene views of the large yard, which features beautiful apple, oak, and elm trees. The neighborhood also offers a future school site, making it an ideal location for families.

Inside, the spacious and serene 5-piece ensuite is a highlight, offering an oversized soaker tub, a large walk-in closet, and plenty



of space to unwind.

Crossfield is a charming small town known for its family-friendly atmosphere, quiet streets, and sense of community. Here, kids can still ride their bikes and play outside safely, yet youâ€™re still close enough to access major amenities. This incredible home is packed with value and will go fast â€“ donâ€™t wait too long to see it!

Built in 2020

Essential Information

MLS® #	A2201108
Price	\$674,900
Bedrooms	5
Bathrooms	4.00
Full Baths	3
Half Baths	1
Square Footage	1,833
Acres	0.12
Year Built	2020
Type	Residential
Sub-Type	Detached
Style	2 Storey
Status	Active

Community Information

Address	241 Vista Drive Sw
Subdivision	N/A
City	Crossfield
County	Rocky View County
Province	Alberta
Postal Code	T0M 0S0

Amenities

Parking Spaces	4
Parking	Double Garage Attached, Garage Faces Front, Concrete Driveway

of Garages 2

Interior

Interior Features Breakfast Bar, Double Vanity, Kitchen Island, Open Floorplan, Pantry, Quartz Counters, Walk-In Closet(s), Closet Organizers, Recessed Lighting

Appliances Dishwasher, Dryer, Garage Control(s), Refrigerator, Stove(s), Washer

Heating Forced Air

Cooling None

Has Basement Yes

Basement Finished, Full

Exterior

Exterior Features Fire Pit, Private Yard

Lot Description Back Yard, Backs on to Park/Green Space, Front Yard, Landscaped, No Neighbours Behind

Roof Asphalt Shingle

Construction Vinyl Siding, Wood Frame

Foundation Poured Concrete

Additional Information

Date Listed April 1st, 2025

Days on Market 2

Zoning R-1B

Listing Details

Listing Office CIR Realty

Data is supplied by Pillar 9â„¢ MLSÂ® System. Pillar 9â„¢ is the owner of the copyright in its MLSÂ® System. Data is deemed reliable but is not guaranteed accurate by Pillar 9â„¢. The trademarks MLSÂ®, Multiple Listing ServiceÂ® and the associated logos are owned by The Canadian Real Estate Association (CREA) and identify the quality of services provided by real estate professionals who are members of CREA. Used under license.