

# \$494,000 - 12 Richelieu Court Sw, Calgary

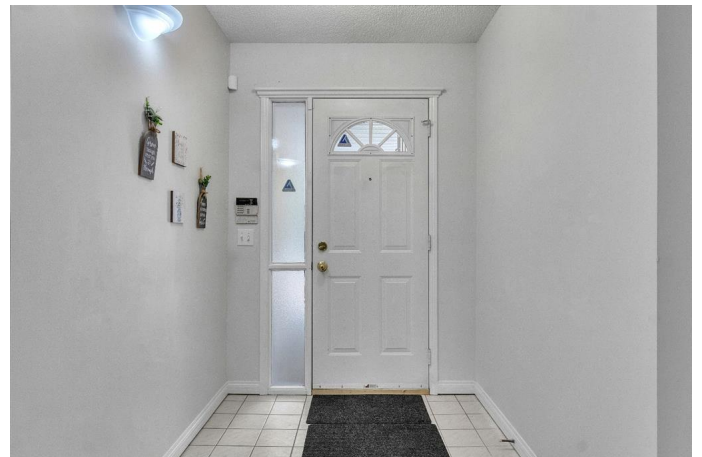
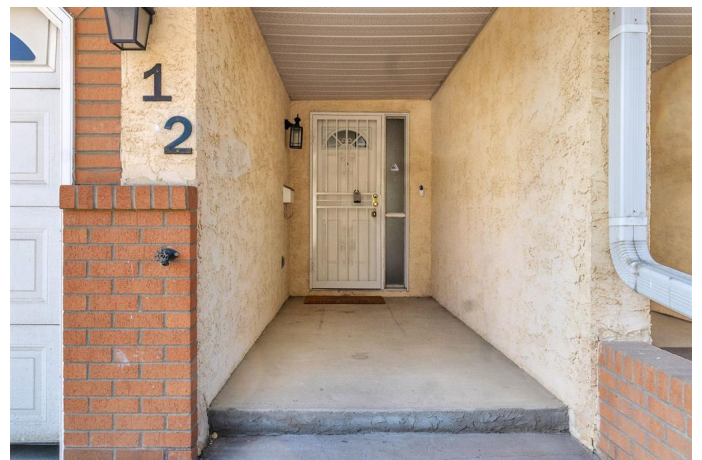
MLS® #A2200825

**\$494,000**

3 Bedroom, 4.00 Bathroom, 1,779 sqft  
Residential on 0.00 Acres

Lincoln Park, Calgary, Alberta

Welcome to this charming 2 Storey townhome located in the highly sought-after Lincoln Park community. Perfect for families or Investors! Nestled in a quiet, well-managed complex, this townhome is located near parks, schools, and local amenities, with a short commute to downtown Calgary. Enjoy the nearby bike paths that lead to North Glenmore Park, Weaselhead Environmental Park, and the Sandy Beach area, which are perfect for outdoor enthusiasts. Plus, youâ€™re just a quick drive to Marda Loop, Westhills Towne Centre, and the Rockyview Hospital. This spacious functional layout features 1,779 sq. ft. of well-designed living space, and a fully finished WALKOUT basement, providing plenty of room for family living and entertaining. The main floor boasts beautiful luxury hardwood flooring, and the bright living room features a large west facing bay window and an elegant wood burning fireplace. The spacious kitchen is perfect for cooking and entertaining, with stainless steel appliances, abundant counter space, with access to a west facing overed seasonal deck area. The spacious master retreat bedroom includes a walk-in closet and a spa-inspired four-piece ensuite bathroom. The ensuite features a deep soaker tub, and a separate walk-in shower â€“ a true retreat after a long day. The upper level also includes two additional bedrooms. The basement offers even more space for relaxation or entertaining, including a large family and games room with den + 3pc bath.



Stay warm in winter with your own insulated, drywalled double car garage, plus extra driveway parking for two vehicles. Family & Pet-Friendly Community: This well-maintained, 40+ adult community with 15+ children and a pet-friendly policy offers peace of mind and a welcoming atmosphere for residents of all ages. The complex takes care of your outdoor maintenance, allowing you more time to enjoy the surrounding amenities and green spaces. This beautifully maintained townhome is move-in ready and offers the perfect blend of convenience, space, and lifestyle. Whether you're looking for a family home or an investment property, this is an opportunity you won't want to miss! Don't wait – schedule your showing today!

Built in 1992

### Essential Information

MLS® #	A2200825
Price	\$494,000
Bedrooms	3
Bathrooms	4.00
Full Baths	3
Half Baths	1
Square Footage	1,779
Acres	0.00
Year Built	1992
Type	Residential
Sub-Type	Row/Townhouse
Style	2 Storey
Status	Active

### Community Information

Address	12 Richelieu Court Sw
Subdivision	Lincoln Park
City	Calgary
County	Calgary

Province Alberta  
Postal Code T3E7E9

### Amenities

Amenities Parking, Snow Removal, Trash  
Parking Spaces 4  
Parking Double Garage Attached, Driveway  
# of Garages 2

### Interior

Interior Features Jetted Tub, Laminate Counters, Open Floorplan, Vinyl Windows, Bookcases, Separate Entrance  
Appliances Dishwasher, Electric Stove, Garage Control(s), Microwave Hood Fan, Refrigerator, Washer/Dryer  
Heating Forced Air, Natural Gas  
Cooling None  
Fireplace Yes  
# of Fireplaces 1  
Fireplaces Living Room, Wood Burning  
Has Basement Yes  
Basement Finished, Full, Walk-Out

### Exterior

Exterior Features Balcony  
Lot Description Low Maintenance Landscape  
Roof Clay Tile  
Construction Stucco, Wood Frame  
Foundation Poured Concrete

### Additional Information

Date Listed March 20th, 2025  
Days on Market 8  
Zoning M-CG

### Listing Details

Listing Office RE/MAX Real Estate (Mountain View)

Data is supplied by Pillar 9â„¢ MLSÂ® System. Pillar 9â„¢ is the owner of the copyright in its MLSÂ® System. Data is deemed reliable but is not guaranteed accurate by Pillar 9â„¢. The trademarks MLSÂ®, Multiple Listing ServiceÂ® and the associated logos are owned by The Canadian Real Estate Association (CREA) and identify the quality of services provided by real estate professionals who are members of CREA. Used under license.