

# \$634,900 - Se-28-49-02-w4, Rural Vermilion River, County of

MLS® #A2200545

**\$634,900**

4 Bedroom, 4.00 Bathroom, 2,319 sqft  
Residential on 5.54 Acres

NONE, Rural Vermilion River, County of, Alberta

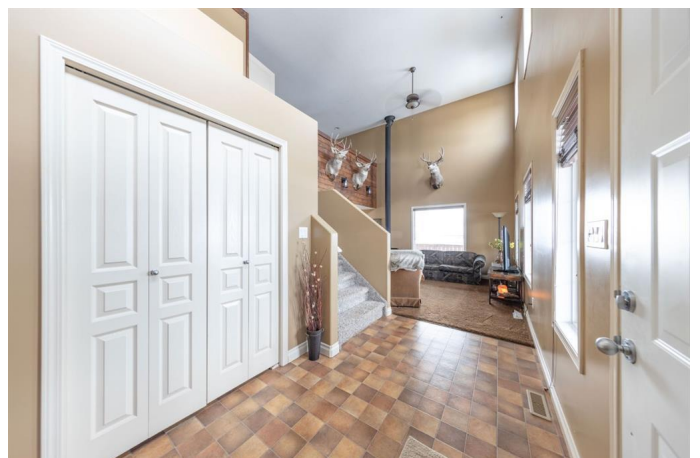
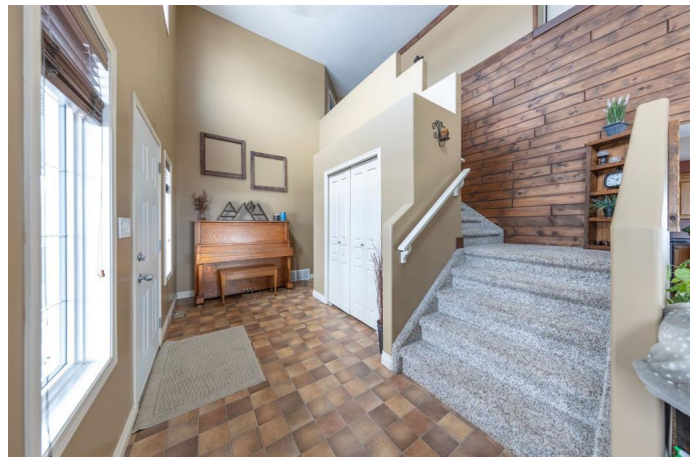
Welcome to your own slice of country paradise! This stunning acreage spans over 5 acres, offering the perfect blend of space, privacy, and convenience. With over 2,300 square feet of living space, this home is designed for comfort and functionality, featuring multiple living areas, spacious bedrooms, and a well-appointed kitchen ready for gatherings. The primary suite provides a private retreat, while the fully finished basement offers even more versatility.

Outside, the possibilities are endless! A massive 30x60 detached shop is perfect for hobbyists, mechanics, or extra storage. Whether you're looking for a peaceful rural escape or a property with room to grow, this acreage has it all. Don't miss the chance to make this dream home yours—schedule a viewing today!

Built in 2005

## Essential Information

MLS® #	A2200545
Price	\$634,900
Bedrooms	4
Bathrooms	4.00
Full Baths	3



Half Baths	1
Square Footage	2,319
Acres	5.54
Year Built	2005
Type	Residential
Sub-Type	Detached
Style	2 Storey, Acreage with Residence
Status	Active

### **Community Information**

Address	Se-28-49-02-w4
Subdivision	NONE
City	Rural Vermilion River, County of
County	Vermilion River, County of
Province	Alberta
Postal Code	T0B0L0

### **Amenities**

Parking	Double Garage Attached
# of Garages	2

### **Interior**

Interior Features	Central Vacuum
Appliances	Dishwasher, Range Hood, Refrigerator, Washer/Dryer
Heating	Forced Air, Natural Gas
Cooling	None
Fireplace	Yes
# of Fireplaces	1
Fireplaces	Wood Burning
Has Basement	Yes
Basement	Finished, Full

### **Exterior**

Exterior Features	Dog Run, Fire Pit, Garden
Lot Description	Few Trees, Lawn
Roof	Asphalt Shingle
Construction	Concrete, Vinyl Siding
Foundation	Poured Concrete

### **Additional Information**

Date Listed March 13th, 2025

Days on Market 23

Zoning Acreage

## **Listing Details**

Listing Office eXp Realty (Lloyd)

Data is supplied by Pillar 9â,,ç MLSÂ® System. Pillar 9â,,ç is the owner of the copyright in its MLSÂ® System. Data is deemed reliable but is not guaranteed accurate by Pillar 9â,,ç. The trademarks MLSÂ®, Multiple Listing ServiceÂ® and the associated logos are owned by The Canadian Real Estate Association (CREA) and identify the quality of services provided by real estate professionals who are members of CREA. Used under license.