

\$729,000 - 1820 38 Street Se, Calgary

MLS® #A2198531

\$729,000

4 Bedroom, 2.00 Bathroom, 945 sqft
Residential on 0.01 Acres

Forest Lawn, Calgary, Alberta

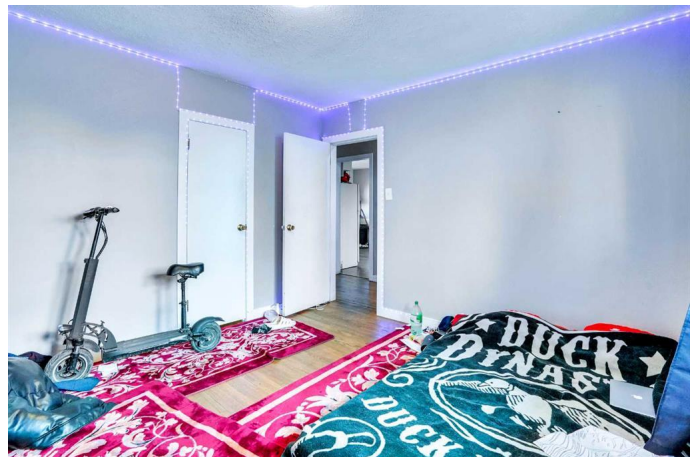
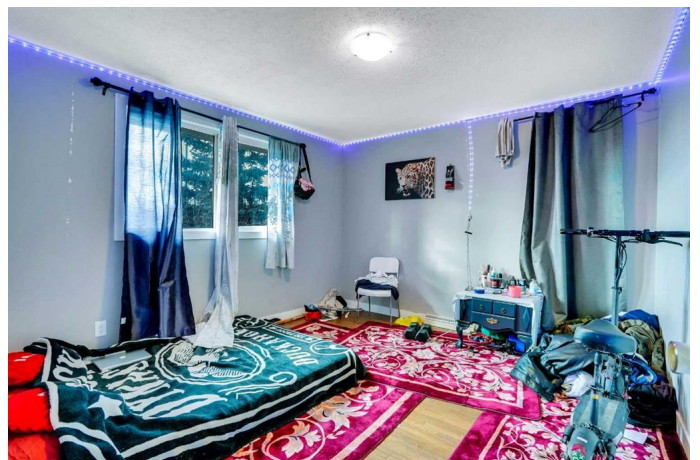
8 Units DP approved of this prime location, just moments from International Ave (17 Ave SE). With convenient access to transit and downtown, this property is a fantastic investment opportunity. The lot features a home with a illegal basement suite, offering immediate rental income or a solid foundation for future development. Whether you choose to buy and hold, renovate, or explore infill development, this property presents limitless possibilities. Don't miss your chance to turn this space into your next great project! Sold as is.

Built in 1958

Essential Information

MLS® #	A2198531
Price	\$729,000
Bedrooms	4
Bathrooms	2.00
Full Baths	2
Square Footage	945
Acres	0.01
Year Built	1958
Type	Residential
Sub-Type	Detached
Style	Bungalow
Status	Active

Community Information



Address	1820 38 Street Se
Subdivision	Forest Lawn
City	Calgary
County	Calgary
Province	Alberta
Postal Code	T2B 0Z3

Amenities

Parking Spaces	2
Parking	Double Garage Detached
# of Garages	2

Interior

Interior Features	See Remarks
Appliances	See Remarks
Heating	Standard, Forced Air, Natural Gas
Cooling	None
Has Basement	Yes
Basement	Finished, Full

Exterior

Exterior Features	Other
Lot Description	Back Lane, Back Yard, Rectangular Lot
Roof	Asphalt Shingle
Construction	Stucco
Foundation	Poured Concrete

Additional Information

Date Listed	March 3rd, 2025
Days on Market	22
Zoning	M-C1

Listing Details

Listing Office	RE/MAX Complete Realty
----------------	------------------------

Data is supplied by Pillar 9â„¢ MLSÂ® System. Pillar 9â„¢ is the owner of the copyright in its MLSÂ® System. Data is deemed reliable but is not guaranteed accurate by Pillar 9â„¢. The trademarks MLSÂ®, Multiple Listing ServiceÂ® and the associated logos are owned by The Canadian Real Estate Association (CREA) and identify the quality of services provided by real estate professionals who are members of CREA. Used under license.