

\$103,900 - 309 Wolf Run Drive, Rural Ponoka County

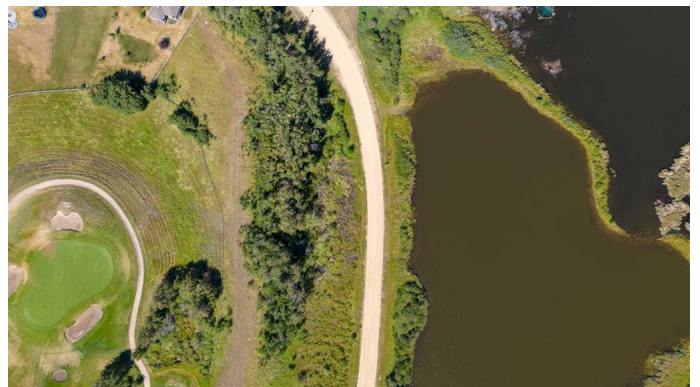
MLS® #A2194603

\$103,900

0 Bedroom, 0.00 Bathroom,
Land on 0.36 Acres

Wolf Creek Village, Rural Ponoka County,
Alberta

309 Wolf Run Drive is a very special lot at Wolf Creek Village. The land offers beautiful, peaceful views of the pond to the North/NE, AND a hilltop South/SW view down to the 12th green of the Links. It is a unique lot that is perfectly suited for an equally unique home. The legendary Wolf Creek Golf Resort is conveniently located between Edmonton and Calgary... just off the QEII and Hwy 2A with quick access to the two closest communities - the Town of Ponoka and the City of Lacombe. Now with new ownership/management, the golf course is re-capturing its former glory. The location also provides easy access to year-round recreational opportunities found in Central Alberta such as J.J. Collett Natural Area, Gull Lake, Rocky Mountain House, etc.



Essential Information

| | |
|-----------|------------------|
| MLS® # | A2194603 |
| Price | \$103,900 |
| Bathrooms | 0.00 |
| Acres | 0.36 |
| Type | Land |
| Sub-Type | Residential Land |
| Status | Active |

Community Information

Address 309 Wolf Run Drive

| | |
|-------------|---------------------|
| Subdivision | Wolf Creek Village |
| City | Rural Ponoka County |
| County | Ponoka County |
| Province | Alberta |
| Postal Code | T4J 0B3 |

Exterior

| | |
|-----------------|--|
| Lot Description | Views, On Golf Course, Native Plants, Reverse Pie Shaped Lot, Rolling Slope, Treed |
|-----------------|--|

School Information

| | |
|----------|-----------------------------------|
| District | Wolf Creek School Division No. 72 |
|----------|-----------------------------------|

Additional Information

| | |
|----------------|---------------------|
| Date Listed | February 14th, 2025 |
| Days on Market | 68 |
| Zoning | RR |

Listing Details

| | |
|----------------|--------------------------------|
| Listing Office | Royal LePage Lifestyles Realty |
|----------------|--------------------------------|

Data is supplied by Pillar 9â,,ç MLSÂ® System. Pillar 9â,,ç is the owner of the copyright in its MLSÂ® System. Data is deemed reliable but is not guaranteed accurate by Pillar 9â,,ç. The trademarks MLSÂ®, Multiple Listing ServiceÂ® and the associated logos are owned by The Canadian Real Estate Association (CREA) and identify the quality of services provided by real estate professionals who are members of CREA. Used under license.