

# \$34 - 151, 78 Saddlepeace Manor Ne, Calgary

MLS® #A2190060

**\$34**

0 Bedroom, 0.00 Bathroom,  
Commercial on 0.00 Acres

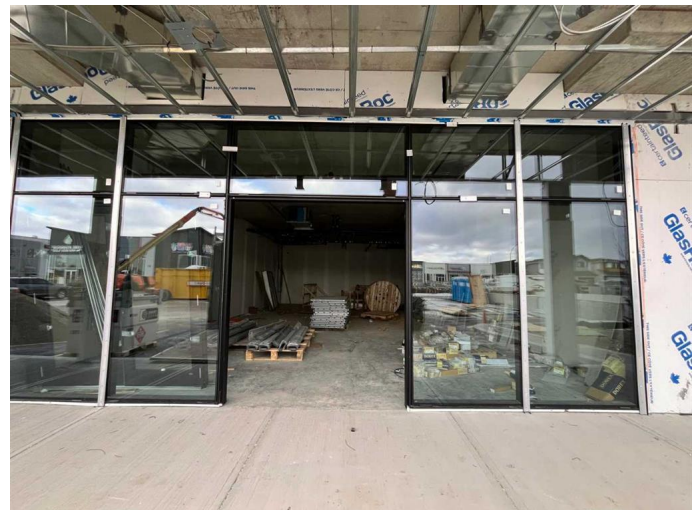
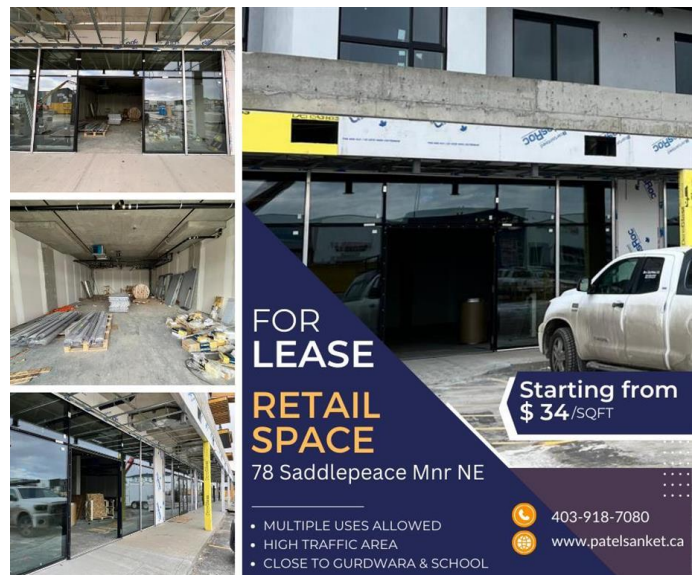
Saddle Ridge, Calgary, Alberta

Looking to start your dream business? This is your chance! This 871.25 sq. ft. retail space in Saddlepeace Manor is the perfect spot to kick off your venture. Situated in a high-traffic area with prime visibility, it's just steps away from a gurdwara and a school, ensuring a steady flow of potential customers. Whether you're opening a boutique, café, or service-based business, this vibrant community offers endless possibilities. Don't wait—secure this ideal location and bring your business vision to life! Contact us today to get started. Please note the following businesses are not permitted due to current exclusivities and the Gurdwara Sahib situated across the street:

- Liquor Store
- Vape Shop
- Doctor's clinic
- Dentist's clinic
- Pharmacy
- Grocery Store or Convenience Store
- Barbershop
- Day Care
- Preschool
- Billiards
- Physio, Chiro or massage
- Pizza

We would also prefer to stay away from Indian clothing stores as we already have one in our plaza within the same development.

Built in 2024



## Essential Information

MLS® #	A2190060
Price	\$34
Bathrooms	0.00
Acres	0.00
Year Built	2024
Type	Commercial
Sub-Type	Retail
Status	Active

## Community Information

Address	151, 78 Saddlepeace Manor Ne
Subdivision	Saddle Ridge
City	Calgary
County	Calgary
Province	Alberta
Postal Code	T3J 2H9

## Additional Information

Date Listed	January 24th, 2025
Days on Market	86

## Listing Details

Listing Office	URBAN-REALTY.ca
----------------	-----------------

Data is supplied by Pillar 9â,,ç MLSÂ® System. Pillar 9â,,ç is the owner of the copyright in its MLSÂ® System. Data is deemed reliable but is not guaranteed accurate by Pillar 9â,,ç. The trademarks MLSÂ®, Multiple Listing ServiceÂ® and the associated logos are owned by The Canadian Real Estate Association (CREA) and identify the quality of services provided by real estate professionals who are members of CREA. Used under license.