

\$54,900 - 4424 45a Avenue, Rocky Mountain House

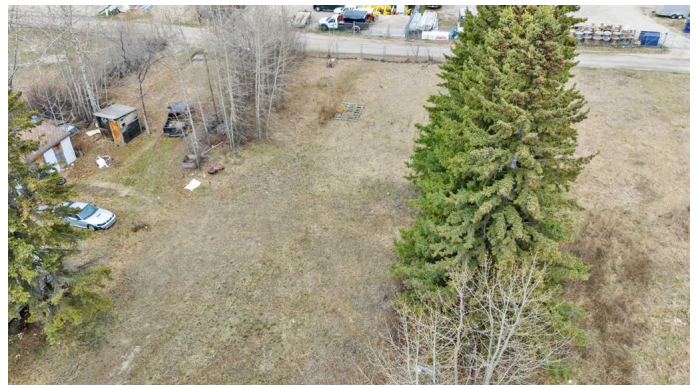
MLS® #A2187700

\$54,900

0 Bedroom, 0.00 Bathroom,
Land on 0.43 Acres

Rocky Mtn House, Rocky Mountain House,
Alberta

Prime general industrial land ready for your development in the heart of Rocky Mountain House (west central Alberta, located approximately 90 km's east of Red Deer / QE2). 0.43 acres, lot measurements are 87ft wide x 212ft deep. The parcel to the east this lot is for sale as well [4416 45A Ave MLS A2187689] both lots would give a development area of 0.88 acres 180ftx212ft. Located a block off the main highway running through the town of Rocky Mountain House, this location is easily accessible and visible from Hwy 11.



Essential Information

MLS® #	A2187700
Price	\$54,900
Bathrooms	0.00
Acres	0.43
Type	Land
Sub-Type	Commercial Land
Status	Active

Community Information

Address	4424 45a Avenue
Subdivision	Rocky Mtn House
City	Rocky Mountain House
County	Clearwater County
Province	Alberta
Postal Code	T4T 1B2

Additional Information

Date Listed January 14th, 2025
Days on Market 99
Zoning (I) General Industrial Us

Listing Details

Listing Office RE/MAX real estate central alberta

Data is supplied by Pillar 9â„¢ MLSÂ® System. Pillar 9â„¢ is the owner of the copyright in its MLSÂ® System. Data is deemed reliable but is not guaranteed accurate by Pillar 9â„¢. The trademarks MLSÂ®, Multiple Listing ServiceÂ® and the associated logos are owned by The Canadian Real Estate Association (CREA) and identify the quality of services provided by real estate professionals who are members of CREA. Used under license.