

\$1,100 - 338 24 Avenue Sw, Calgary

MLS® #A2183731

\$1,100

0 Bedroom, 0.00 Bathroom,
Commercial on 0.10 Acres

Mission, Calgary, Alberta

Individual offices for rent \$1100 per month plus \$400 for wireless internet access, utilities and shared access to our common areas. Located downtown kitty corner to Earls Tin Palace.

Built in 1912

Essential Information

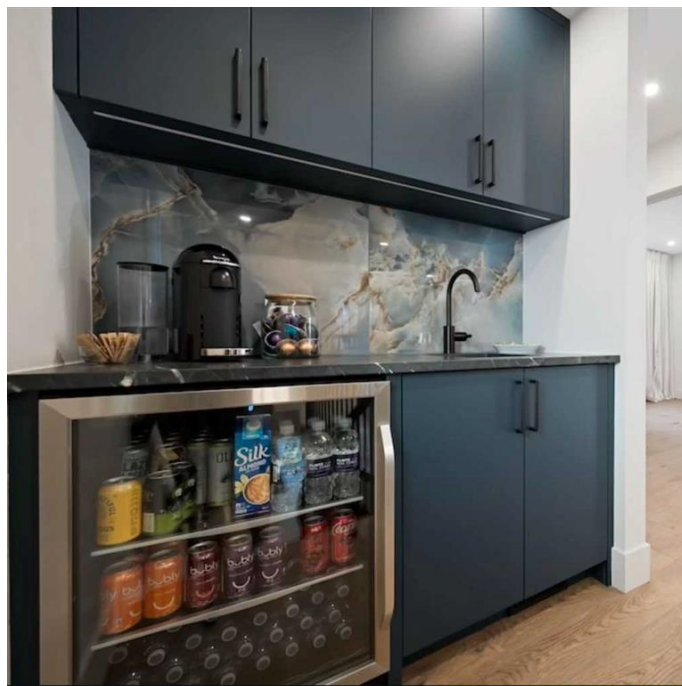
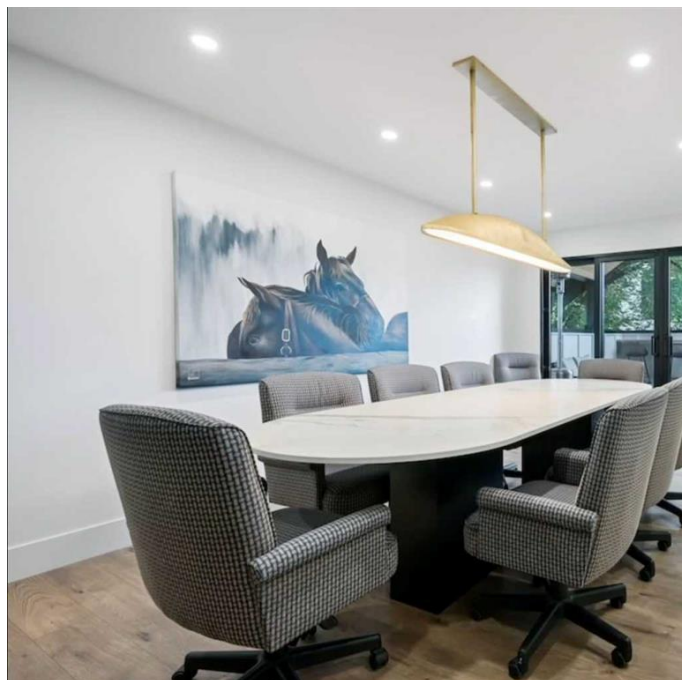
| | |
|------------|------------|
| MLS® # | A2183731 |
| Price | \$1,100 |
| Bathrooms | 0.00 |
| Acres | 0.10 |
| Year Built | 1912 |
| Type | Commercial |
| Sub-Type | Office |
| Status | Active |

Community Information

| | |
|-------------|------------------|
| Address | 338 24 Avenue Sw |
| Subdivision | Mission |
| City | Calgary |
| County | Calgary |
| Province | Alberta |
| Postal Code | T2S 0K2 |

Additional Information

| | |
|----------------|---------------------|
| Date Listed | December 23rd, 2024 |
| Days on Market | 122 |
| Zoning | C-COR1 |



Listing Details

Listing Office

Century 21 Masters

Data is supplied by Pillar 9â„¸ MLSÂ® System. Pillar 9â„¸ is the owner of the copyright in its MLSÂ® System. Data is deemed reliable but is not guaranteed accurate by Pillar 9â„¸. The trademarks MLSÂ®, Multiple Listing ServiceÂ® and the associated logos are owned by The Canadian Real Estate Association (CREA) and identify the quality of services provided by real estate professionals who are members of CREA. Used under license.