

\$224,900 - 10131 102 Avenue, Grande Prairie

MLS® #A2182522

\$224,900

0 Bedroom, 0.00 Bathroom,
Commercial on 0.09 Acres

Central Business District., Grande Prairie,
Alberta

Discover a rare opportunity in the heart of Grande Prairie—a 778-square-foot mixed-use commercial property perfectly positioned on 102 Avenue between Tim Horton's and Muskoseepi Park. This versatile property offers commercial upgrades, ample rear parking with alley access, and abundant street parking for clients. Wheelchair access at the front welcomes visitors into a functional main floor, making it an ideal choice for a small business/retail/message with the opportunity to have living quarters at the rear of the building. For more details or to arrange a viewing, contact your local Commercial Realtor®.

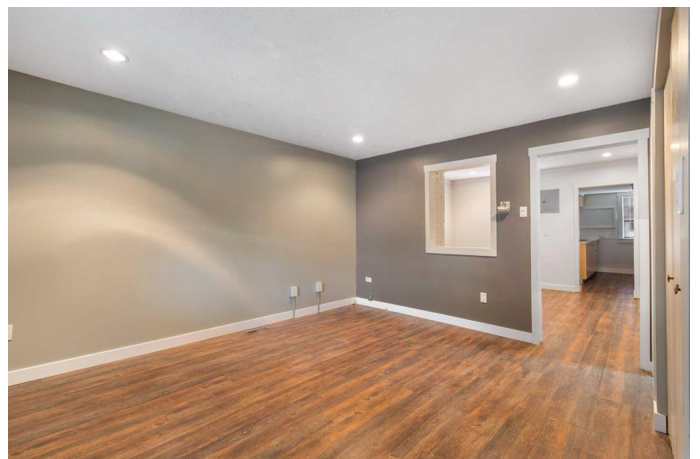
Built in 1940

Essential Information

MLS® #	A2182522
Price	\$224,900
Bathrooms	0.00
Acres	0.09
Year Built	1940
Type	Commercial
Sub-Type	Mixed Use
Status	Active

Community Information

Address	10131 102 Avenue
Subdivision	Central Business District.



City	Grande Prairie
County	Grande Prairie
Province	Alberta
Postal Code	T8V 0Z9

Additional Information

Date Listed	January 6th, 2025
Days on Market	104
Zoning	CC

Listing Details

Listing Office	RE/MAX Grande Prairie
----------------	-----------------------

Data is supplied by Pillar 9â„¢ MLS® System. Pillar 9â„¢ is the owner of the copyright in its MLS® System. Data is deemed reliable but is not guaranteed accurate by Pillar 9â„¢. The trademarks MLS®, Multiple Listing Service® and the associated logos are owned by The Canadian Real Estate Association (CREA) and identify the quality of services provided by real estate professionals who are members of CREA. Used under license.