

\$469,900 - 201 Penbrooke Close Se, Calgary

MLS® #A2176321

\$469,900

5 Bedroom, 2.00 Bathroom, 974 sqft
Residential on 0.10 Acres

Penbrooke Meadows, Calgary, Alberta

Looking to add to your investment portfolio or looking to jump into the market? Great Bi-Level with illegal basement suite. Main floor has hardwood floors, 3 BR, Bathroom, Living Room, Dining Room and Kitchen. Lower unit has 2 BR, Bathroom, Living/Dining and Kitchen. Huge back yard with gravel pad and RV parking. Single under drive garage. Property is vacant easy to show. Close to amenities, transportation and everything else that matters.

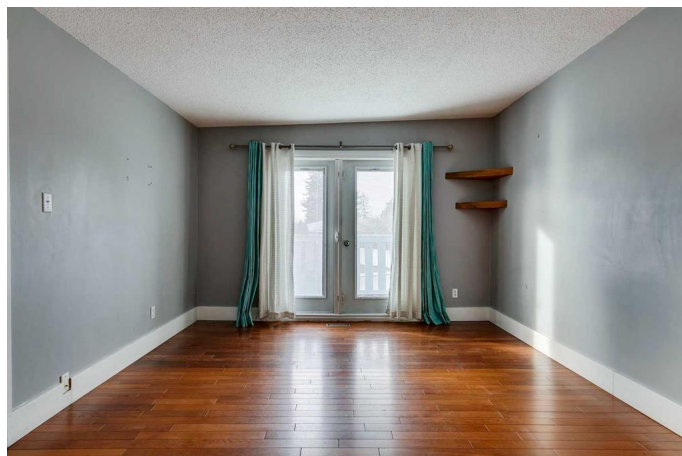
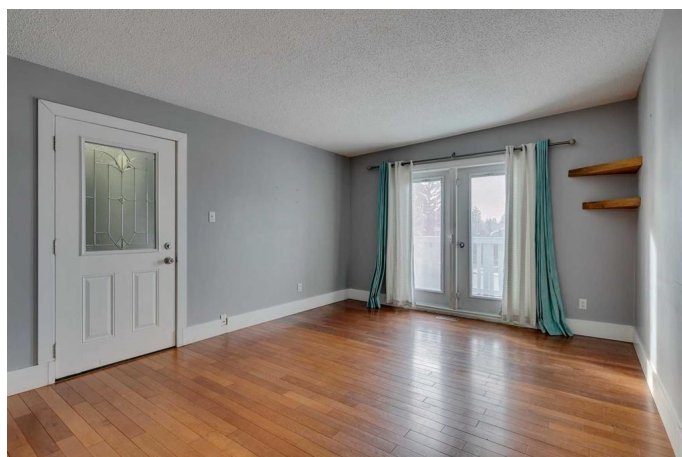
Built in 1972

Essential Information

MLS® #	A2176321
Price	\$469,900
Bedrooms	5
Bathrooms	2.00
Full Baths	2
Square Footage	974
Acres	0.10
Year Built	1972
Type	Residential
Sub-Type	Semi Detached
Style	Side by Side, Bi-Level
Status	Active

Community Information

Address	201 Penbrooke Close Se
Subdivision	Penbrooke Meadows



City	Calgary
County	Calgary
Province	Alberta
Postal Code	T2A 3N9

Amenities

Parking Spaces	2
Parking	RV Access/Parking, Single Garage Attached
# of Garages	1

Interior

Interior Features	Ceiling Fan(s), See Remarks
Appliances	Microwave Hood Fan
Heating	Forced Air
Cooling	None
Has Basement	Yes
Basement	Full, Suite

Exterior

Exterior Features	Private Yard
Lot Description	Back Lane, Back Yard
Roof	Asphalt Shingle
Construction	See Remarks, Stucco
Foundation	Poured Concrete

Additional Information

Date Listed	November 6th, 2024
Days on Market	140
Zoning	R-CG

Listing Details

Listing Office	RE/MAX First
----------------	--------------

Data is supplied by Pillar 9â„¢ MLSÂ® System. Pillar 9â„¢ is the owner of the copyright in its MLSÂ® System. Data is deemed reliable but is not guaranteed accurate by Pillar 9â„¢. The trademarks MLSÂ®, Multiple Listing ServiceÂ® and the associated logos are owned by The Canadian Real Estate Association (CREA) and identify the quality of services provided by real estate professionals who are members of CREA. Used under license.