

\$200,000 - 31, 1410 43 Street S, Lethbridge

MLS® #A2174823

\$200,000

2 Bedroom, 1.00 Bathroom, 1,172 sqft
Mobile on 0.00 Acres

Parkview, Lethbridge, Alberta

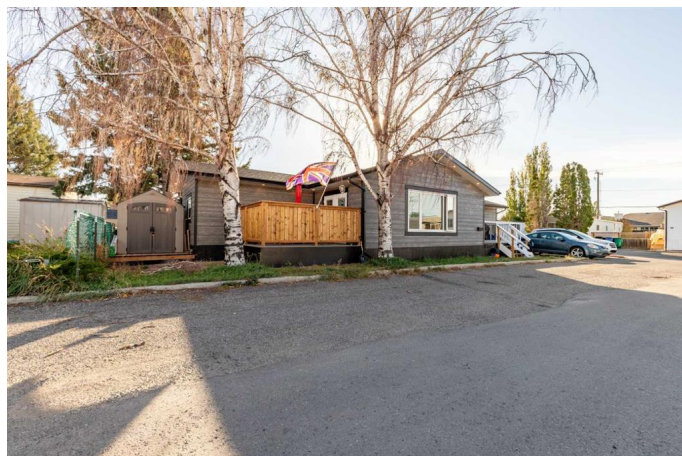
A fully renovated home with addition in Parkview Estates! This 2 bed, 1 bath home offers 1,172 sq/ft of space including a massive kitchen with acacia live edge counter tops, dining area, living area and 2 outdoor spaces as well! With no work left for you to do, 2 off-street parking spaces and an accessible bathroom this home makes downsizing easy. Parkview Estates is quietly tucked away in a convenient south-side neighbourhood close to many amenities and arterial roads. Renovations include new roof, furnace, AC, stainless steel appliances, paint, flooring, light fixtures and the list goes on!

Built in 1976

Essential Information

MLS® #	A2174823
Price	\$200,000
Bedrooms	2
Bathrooms	1.00
Full Baths	1
Square Footage	1,172
Acres	0.00
Year Built	1976
Type	Mobile
Sub-Type	Mobile
Style	Single Wide Mobile Home
Status	Active

Community Information



Address	31, 1410 43 Street S
Subdivision	Parkview
City	Lethbridge
County	Lethbridge
Province	Alberta
Postal Code	T1K 3S5

Amenities

Parking Spaces	2
Parking	Parking Pad

Interior

Appliances	Dishwasher, Microwave Hood Fan, Refrigerator, Washer/Dryer, Window Coverings, Stove(s)
Heating	Forced Air
Cooling	Central Air

Exterior

Roof	Asphalt Shingle
------	-----------------

Additional Information

Date Listed	October 28th, 2024
Days on Market	180

Listing Details

Listing Office	Grassroots Realty Group
----------------	-------------------------

Data is supplied by Pillar 9â„¢ MLSÂ® System. Pillar 9â„¢ is the owner of the copyright in its MLSÂ® System. Data is deemed reliable but is not guaranteed accurate by Pillar 9â„¢. The trademarks MLSÂ®, Multiple Listing ServiceÂ® and the associated logos are owned by The Canadian Real Estate Association (CREA) and identify the quality of services provided by real estate professionals who are members of CREA. Used under license.